

Optimize Operations Improve Flexibility



Versatility

Bakeries, deli counters, floral departments and backrooms: FreshWay K offers a multitude of applications that serve to improve customer experience, streamline operations and enhance data collection. Ticket printing, label printing, kiosk terminal info sharing and digital marketing are just a few of its capabilities.



Compact Design

The FreshWay K offers streamlined ticket printing functionality in a compact design. Benefit from dynamic real-time product and pricing information and asset management with a customizable and intuitive customer interface.



Enhanced Printing

The FreshWay K provides a variety of printing options to suit your retail counter needs, including a 2" label printer, a 3" linerless printer, and remote mounting. This flexibility enables the FreshWay K to adapt to changing printing needs based on application.



Intuitive Software

The user interface of the FreshWay K offers simplified operation with UC3 software, which is user-friendly for both new employees and experienced operators. Less training time means lower costs and more time for high-quality customer service.



FreshWay K

The FreshWay K is a fresh, future-proof way for food retailers to meet the needs of today's most demanding ticket printing and customer kiosk applications. From ticket printing for the floral department or bakery, to backroom prepackaging solutions, FreshWay K offers a solution to an array of grocery retail needs without a weighing platform.

The FreshWay K also runs with secure UC3 software, enabling total visibility and data across your enterprise. Streamline information and make real time decisions with all equipment running on FreshPro.

Technical Data

FreshWay K

Operator Touchscreen Display

- 12.1" (30.7 cm) capacitive touchscreen with a bright, high-contrast TFT LED backlit display
 - Screen resolution: 1024 x 768 pixels
- Continuous tilt angle adjustments (stepless)
- Optional 15.6" (39.6 cm) capacitive touchscreen with a bright, high-contrast TFT LED backlit display
 - Screen resolution: 1366 x 768 pixels
- Optional bar code scanner

Customer Display (Optional)

- 12.1" (30.7 cm) customer display with bright, high-contrast TFT LED backlit technology
 - Screen resolution: 1024 x 768 pixels
- 15.6" (39.6 cm) customer display with bright, high-contrast TFT LED backlit technology
 - Screen resolution: 1366 x 768 pixels

Printing

- Printing width: 2.2" (56 mm)
- Paper width: 1.7 – 2.4" (44 – 62 mm)
- Printing speed: up to 5.9"/sec (150 mm/sec)
- Print resolution: 8 dots/mm
- Separate paper feed button
- Pole-mounted printer options:
 - 2-inch (50.8 mm) ticket printer
 - 2-inch (50.8 mm) label printer
 - 2-inch (50.8 mm) linerless printer
 - 3-inch (76.2 mm) linerless printer
- Remote-mounted (up to 4m) printer options:
 - 3-inch (76.2 mm) label printer
 - 3-inch (76.2 mm) linerless printer

Processor/Memory/Data Storage

- Intel® Processor
- Up to 8 GB RAM
- Up to 128 GB Flash

Operating System

- Microsoft Windows® 10 IoT Enterprise 64-bit

Scale Software

- UC3 application

Power Rating

- 100 – 240 V AC, 50 / 60 Hz
- Average consumption during operation: ca. 26 W

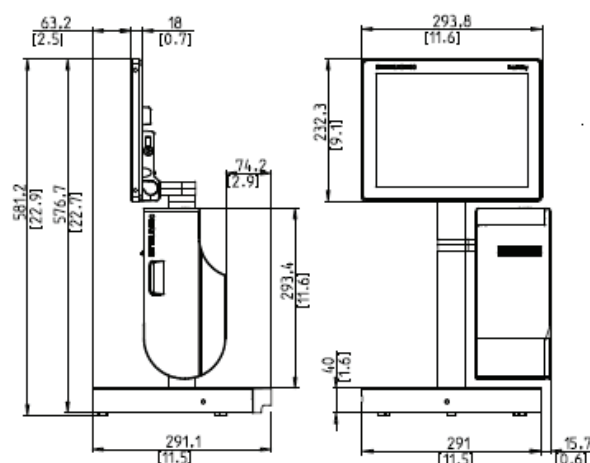
Interfaces and Protocols

- Ethernet interface (10/100)
- 1 x RJ11 interface for controlling the cash register drawer
- 2 x USB 2.0 ports
- 1 x USB 3.0 port
- 1 x RJ50 port for the external printer
- Integrated wireless solution for wireless data transmission in accordance with standard IEEE 802.11 ac/a/b/g/n(2T2R), with 2 x 2 MIMO

Housing

- Impact-resistant housing made of die-cast aluminum

Intel is a registered trademark of Intel Corporation in the U.S. and/or other countries. Microsoft® and Windows® are registered trademarks of Microsoft Corporation in the United States and/or other countries.



www.mt.com/retail

For more information

METTLER TOLEDO Group

Retail Division

Local contact: www.mt.com/contacts



Subject to technical changes

©09/2024 METTLER TOLEDO. All rights reserved

MarCom RET